

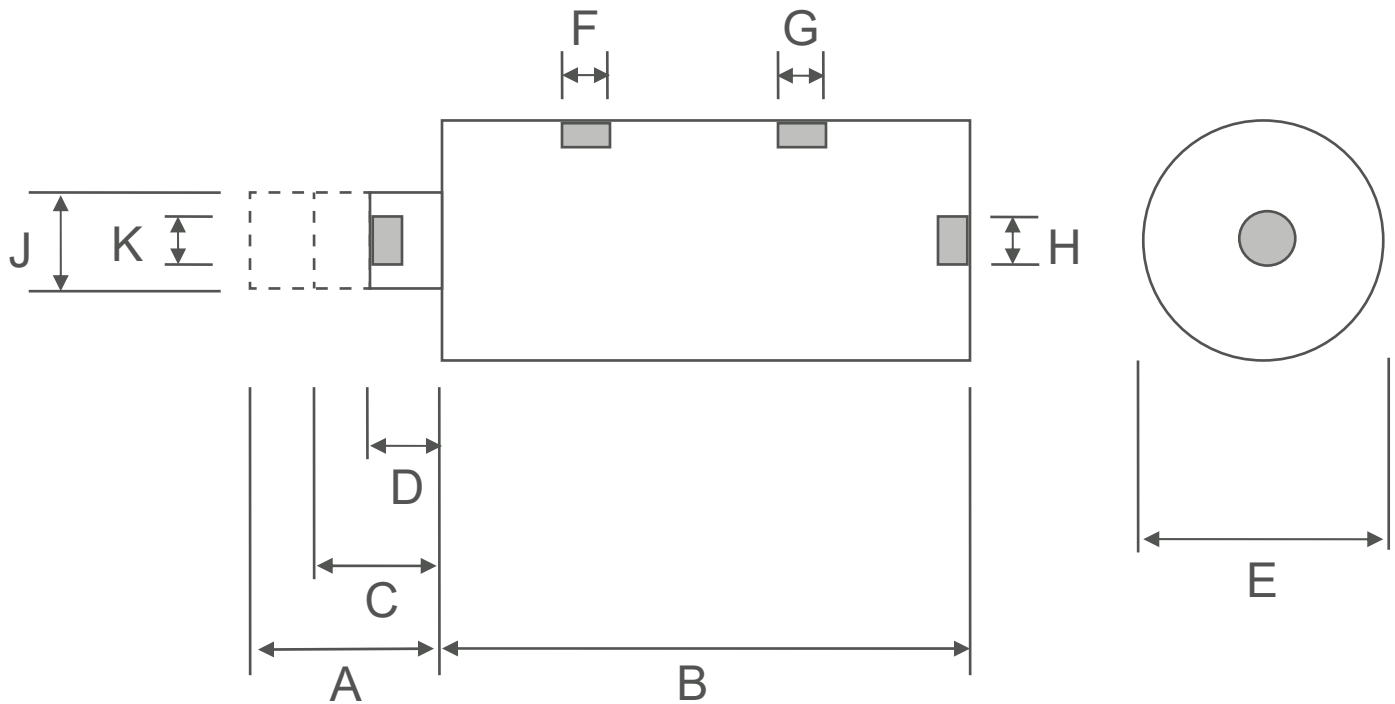


Oscillator Vibrator - Flexible linear force vibrator with an external weight which allows vibration force and frequency to be adjusted; recommended for feeder applications.

SPECIFICATIONS

| MODEL | COMBINED OSCILLATING WEIGHT LBS. | AIR CONSUMPTION CFM | | | FREQUENCY VPM | | | FORCE LBS | | | UNBAL | | |
|---------|----------------------------------|---------------------|-------|-------|---------------|------|------|--------------|------|------|--------------|--------|--------|
| | | PRESSURE PSI | | | PRESSURE PSI | | | PRESSURE PSI | | | PRESSURE PSI | | |
| | | 30 | 60 | 90 | 30 | 60 | 90 | 30 | 60 | 90 | 30 | 60 | 90 |
| VOS-63 | 0.29 Piston | 1.10 | 1.90 | 2.70 | 2040 | 2400 | 2670 | 12 | 16 | 20 | 0.203 | 0.196 | 0.198 |
| | 0.79 Piston + WC | 0.85 | 1.50 | 2.20 | 1120 | 1280 | 1380 | 14 | 20 | 23 | 0.786 | 0.860 | 0.840 |
| | 0.29 Piston + WD | 0.80 | 1.40 | 2.00 | 950 | 1100 | 1290 | 13 | 24 | 24 | 1.01 | 1.40 | 1.02 |
| | 2.29 Piston + 2x WD | 0.70 | 1.30 | 1.90 | 730 | 850 | 920 | 12 | 20 | 20 | 1.60 | 1.95 | 1.66 |
| | 3.29 Piston + 3x WD | 0.60 | 1.20 | 1.80 | 590 | 680 | 760 | 11 | 18 | 18 | 2.23 | 2.75 | 2.19 |
| VOS-65 | 0.31 Piston | 0.98 | 1.65 | 2.25 | 2110 | 2470 | 2640 | 13 | 18 | 22 | 0.206 | .208 | .22 |
| | 0.81 Piston + WC | 0.78 | 1.30 | 2.00 | 1180 | 1380 | 1520 | 18 | 26 | 33 | 0.91 | .96 | 1.01 |
| | 1.31 Piston + WD | 0.55 | 1.07 | 1.60 | 1000 | 1200 | 1310 | 20 | 29 | 39 | 1.41 | 1.42 | 1.60 |
| | 2.31 Piston + 2x WD | 0.54 | 0.99 | 1.41 | 820 | 960 | 1030 | 21 | 30 | 40 | 2.20 | 2.29 | 2.66 |
| | 3.09 Housing | 0.52 | 0.86 | 1.31 | 740 | 860 | 950 | 19 | 27 | 34 | 2.44 | 2.57 | 2.65 |
| VOS-100 | 6.09 Housing + 3x WD | 0.42 | 0.72 | 1.20 | 490 | 630 | 680 | 12 | 23 | 31 | 3.52 | 4.08 | 4.72 |
| | 1.00 Piston | 2.80 | 4.20 | 5.70 | 1620 | 1850 | 2060 | 30 | 52 | 80 | 0.81 | 1.07 | 1.32 |
| | 3.00 Piston + WE | 2.40 | 3.50 | 4.80 | 1060 | 1150 | 1390 | 43 | 73 | 102 | 2.70 | 3.89 | 3.72 |
| | 4.00 Piston + WF | 2.20 | 3.00 | 3.90 | 930 | 1050 | 1100 | 64 | 75 | 120 | 5.21 | 5.00 | 6.98 |
| | 7.00 Piston + 2x WF | 2.00 | 2.70 | 3.40 | 680 | 760 | 880 | 63 | 76 | 123 | 9.60 | 9.20 | 11.20 |
| | 8.80 Housing + WF | 1.80 | 2.40 | 3.40 | 590 | 660 | 760 | 72 | 80 | 123 | 14.60 | 12.90 | 15.00 |
| VOS-160 | 11.80 Housing + 2x WF | 1.70 | 2.40 | 3.20 | 480 | 560 | 680 | 43 | 82 | 124 | 13.10 | 18.40 | 18.90 |
| | 2.80 Piston | 4.90 | 8.80 | 12.40 | 1520 | 1730 | 1930 | 64 | 100 | 131 | 2.00 | 2.40 | 2.50 |
| | 7.80 Piston + WG | 4.10 | 7.50 | 10.70 | 1060 | 1200 | 1410 | 80 | 121 | 163 | 5.00 | 5.90 | 5.80 |
| | 9.20 Housing | 3.40 | 6.00 | 9.60 | 830 | 930 | 1030 | 100 | 142 | 181 | 10.20 | 11.60 | 12.00 |
| | 10.80 Piston + WH | 3.30 | 5.60 | 8.20 | 740 | 840 | 950 | 123 | 183 | 242 | 15.80 | 18.20 | 18.90 |
| | 17.20 Housing + WH | 2.90 | 5.70 | 8.20 | 660 | 750 | 840 | 130 | 200 | 268 | 21.00 | 25.00 | 26.70 |
| VOS-220 | 25.20 Housing + 2x WH | 2.80 | 5.80 | 8.20 | 580 | 670 | 760 | 142 | 216 | 290 | 29.70 | 33.90 | 35.40 |
| | 4.60 Piston | 8.50 | 15.30 | 22.80 | 1750 | 2010 | 2380 | 170 | 240 | 280 | 3.90 | 4.20 | 3.50 |
| | 7.40 Piston + WI | 7.90 | 14.10 | 21.10 | 1300 | 1510 | 1800 | 180 | 255 | 340 | 7.50 | 7.90 | 7.40 |
| | 12.40 Housing | 6.60 | 10.80 | 15.70 | 990 | 1180 | 1400 | 260 | 360 | 510 | 18.70 | 18.20 | 18.30 |
| | 20.40 Housing + WJ | 5.80 | 10.10 | 14.30 | 770 | 900 | 1030 | 270 | 425 | 530 | 32.10 | 37.00 | 35.20 |
| VOS-340 | 29.60 Piston + WK | 5.40 | 9.30 | 13.70 | 650 | 760 | 900 | 260 | 450 | 610 | 43.40 | 54.00 | 53.00 |
| | 54.60 Piston + WL | 4.60 | 8.80 | 13.20 | 530 | 610 | 810 | 210 | 415 | 530 | 52.70 | 80.40 | 56.90 |
| | 11.70 Piston | 15.10 | 22.30 | 29.00 | 1960 | 2260 | 2500 | 195 | 260 | 325 | 3.60 | 3.60 | 3.70 |
| | 19.70 Piston + WJ | 11.80 | 19.50 | 26.50 | 1420 | 1700 | 1900 | 305 | 390 | 470 | 10.70 | 9.50 | 9.20 |
| | 25.40 Housing | 11.20 | 18.50 | 25.50 | 1100 | 1300 | 1500 | 400 | 520 | 665 | 23.30 | 21.70 | 20.80 |
| VOS-435 | 36.70 Piston + WK | 9.40 | 16.00 | 23.30 | 950 | 1090 | 1250 | 475 | 640 | 780 | 37.10 | 37.90 | 35.20 |
| | 61.70 Piston + WL | 8.70 | 14.50 | 19.70 | 760 | 850 | 930 | 760 | 940 | 1150 | 92.70 | 91.70 | 93.60 |
| | 86.70 Piston + WM | 8.60 | 13.30 | 21.50 | 680 | 760 | 850 | 1140 | 1420 | 1610 | 173.00 | 173.10 | 156.90 |
| | 111.70 Piston + 1 WK + 1 WM | 8.60 | 13.30 | 21.50 | 630 | 720 | 810 | 1200 | 1440 | 1680 | 212.90 | 195.60 | 180.30 |
| | 17.75 Piston | 16.00 | 24.50 | 30.00 | 2320 | 2650 | 2900 | 440 | 520 | 610 | 5.80 | 5.20 | 5.10 |
| | 25.75 Piston + WJ | 15.50 | 24.00 | 29.00 | 1870 | 2160 | 2410 | 540 | 740 | 950 | 10.90 | 11.20 | 11.50 |
| VOS-435 | 38.58 Housing | 15.00 | 23.60 | 28.50 | 1470 | 1720 | 1970 | 500 | 730 | 1020 | 16.30 | 18.80 | 18.50 |
| | 67.75 Piston + WL | 13.90 | 21.60 | 28.20 | 1050 | 1220 | 1360 | 540 | 770 | 1080 | 34.50 | 36.40 | 41.10 |
| | 88.58 Housing + WL | 13.50 | 21.30 | 27.60 | 890 | 1070 | 1230 | 570 | 850 | 1200 | 50.70 | 52.30 | 55.90 |
| | 92.75 Piston + WM | 13.50 | 21.20 | 27.50 | 810 | 990 | 1170 | 575 | 830 | 1180 | 61.70 | 59.60 | 60.70 |
| VOS-435 | 113.58 Housing + WM | 13.20 | 20.50 | 26.90 | 770 | 900 | 1020 | 610 | 880 | 1060 | 72.50 | 76.50 | 71.50 |

DIMENSIONS



| MODEL | DIMENSIONS (INCHES) | | | | | | | | | | |
|---------|---------------------|------|------|------|------|------|------|-----|------|-----|-----------|
| | A | B | C | D | E | F | G | H | J | K | Wgt (Lbs) |
| VOS-63 | 1.69 | 4.49 | 0.92 | 0.35 | 1.97 | 1/8" | 1/8" | M10 | 0.59 | M10 | 1.15 |
| VOS-65 | 1.57 | 4.33 | 0.90 | 0.20 | 1.93 | 1/8" | 1/8" | M10 | 0.63 | M10 | 3.28 |
| VOS-100 | 2.13 | 5.43 | 1.44 | 0.35 | 2.52 | 1/4" | 1/4" | M16 | 0.98 | M16 | 7.03 |
| VOS-160 | 2.24 | 5.51 | 1.42 | 0.47 | 3.31 | 3/8" | 3/8" | M16 | 1.57 | M16 | 12.06 |
| VOS-220 | 2.17 | 4.92 | 1.21 | 0.67 | 4.33 | 3/8" | 3/8" | M20 | 2.17 | M20 | 17.24 |
| VOS-340 | 2.17 | 4.80 | 1.43 | 0.79 | 6.30 | 3/8" | 3/8" | M20 | 3.35 | M20 | 37.28 |
| VOS-435 | 2.17 | 4.80 | 1.43 | 0.87 | 7.87 | 3/8" | 3/8" | M20 | 4.33 | M20 | 56.95 |

Distributed By:



ChicagoVibratorProducts
Flow and Compaction

Division of CVP Group
800-842-7284 (P)
866-247-7538 (F)
Solutions@ChiVib.com
www.ChicagoVibrator.com